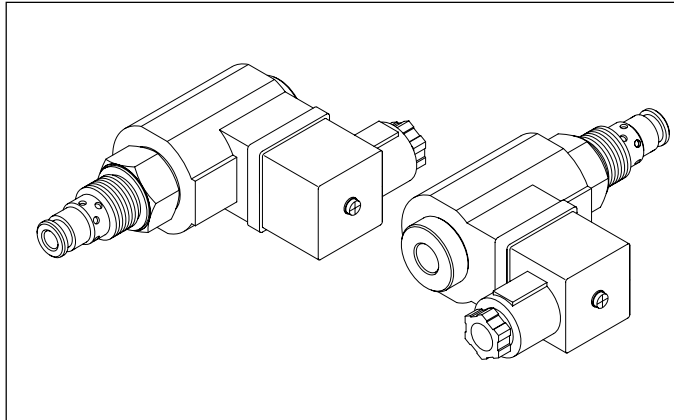
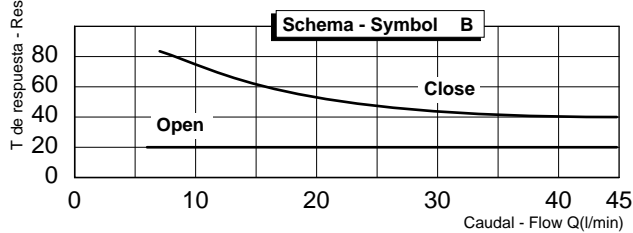
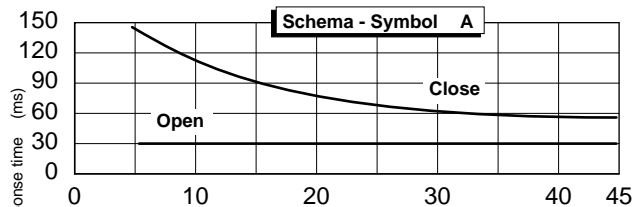
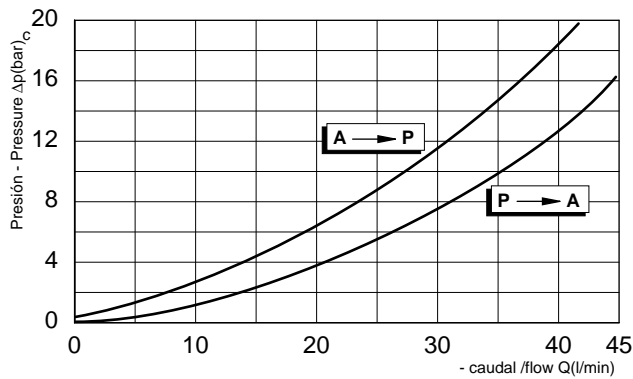


Válvula eléctrica 2 vías unidireccional pilotada - a cartucho  
 Two ways pilot operated electric valve - cartridge style  
 mod. EV40 - C

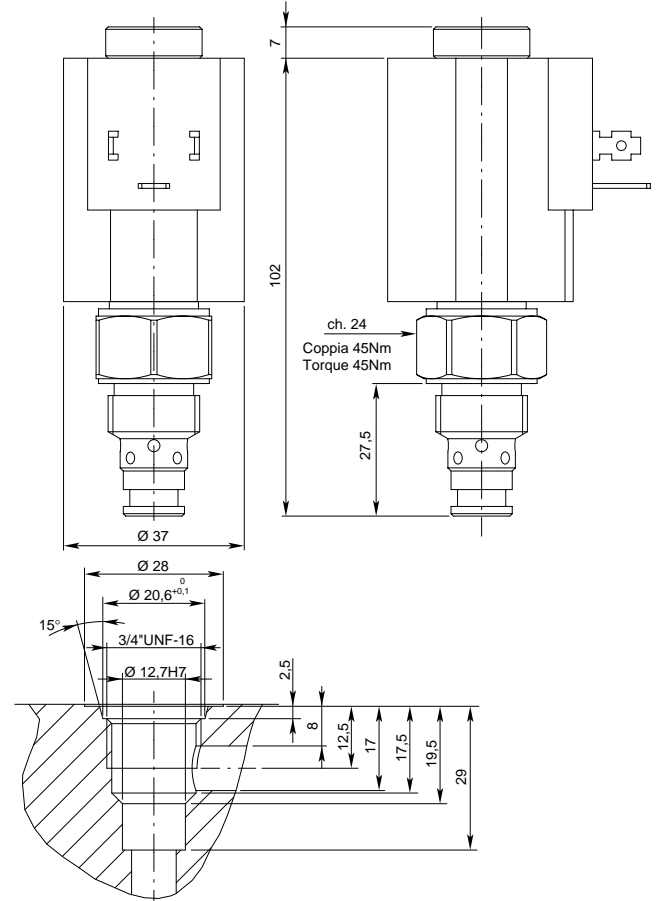


Cod.	Esquema Symbol	Función posible con solenoide: Operating features with solenoid:	
		desenergizado de-energized	energizado energized
<b>A</b>		P → A A → P	P → A A → P
<b>B</b>		P → A A → P	P → A A → P
<b>M</b>		P → A A → P	P → A A → P

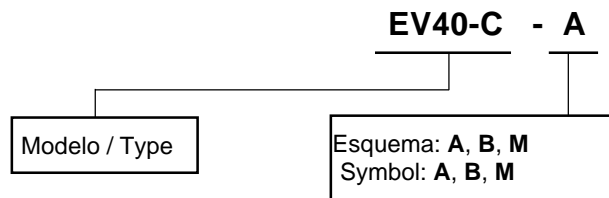


Modello EV40-C Type EV40-C	Presión máxima Max pressure bar	Caudal max Max flow l / min
Esquema - Symbol A	300	45
Esquema - Symbol B		
Esquema - Symbol C		

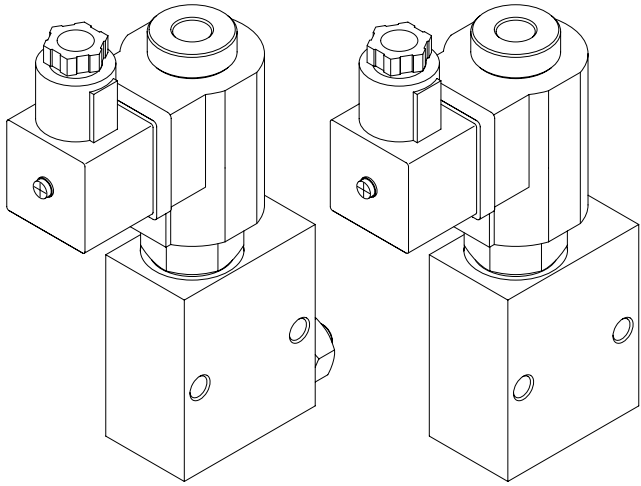
Todos los datos y calibraciones han sido obtenidos con aceite 30 cSt a 50 °C. Campo de temperatura admisible: -20 °C, +90 °C. Filtración absoluta: 25µ.  
 los datos no son imperativos, CBF se reserva el derecho a modificaciones sinb previo aviso.  
 .All performances and calibrations are carried out by using hydraulic oil with viscosity approx. 30 cSt at 50 °C. Temperature range: -20 °C, +90 °C. Filtration absolute: 25µ.  
 The specifications are not binding, CBF reserves the right to introduce modifications without notice.



Codificación pedido / Ordering code

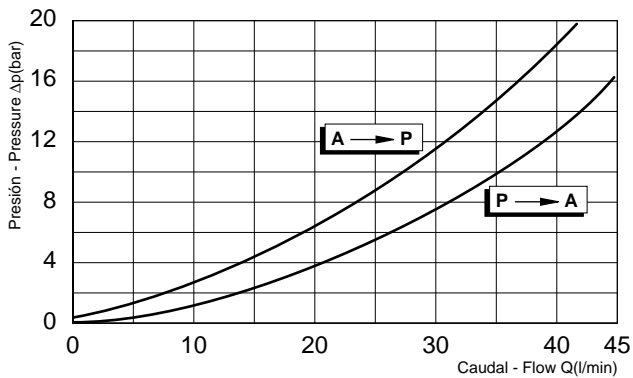


**Válvula eléctrica 2 vías unidireccional pilotada con o sin accionamiento de emergencia**  
**Two ways pilot operated electric valve with or without emergency screw**  
**mod. EV40 / EV40VE**

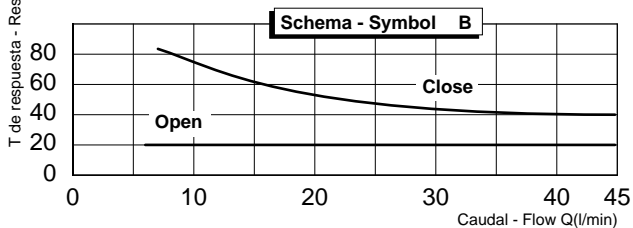
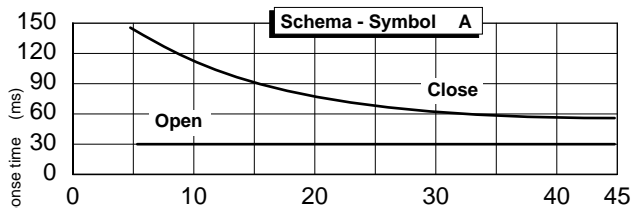


Cod.	Esquema Symbol	Función posible con solenoide: Operating features with solenoid:	
		desescitado de-energized	escitado energized
<b>A</b>		P → A	P → A
		A → P	A → P
<b>B</b>		P → A	P → A
		A → P	A → P

Esquema hidráulico / Hydraulic scheme



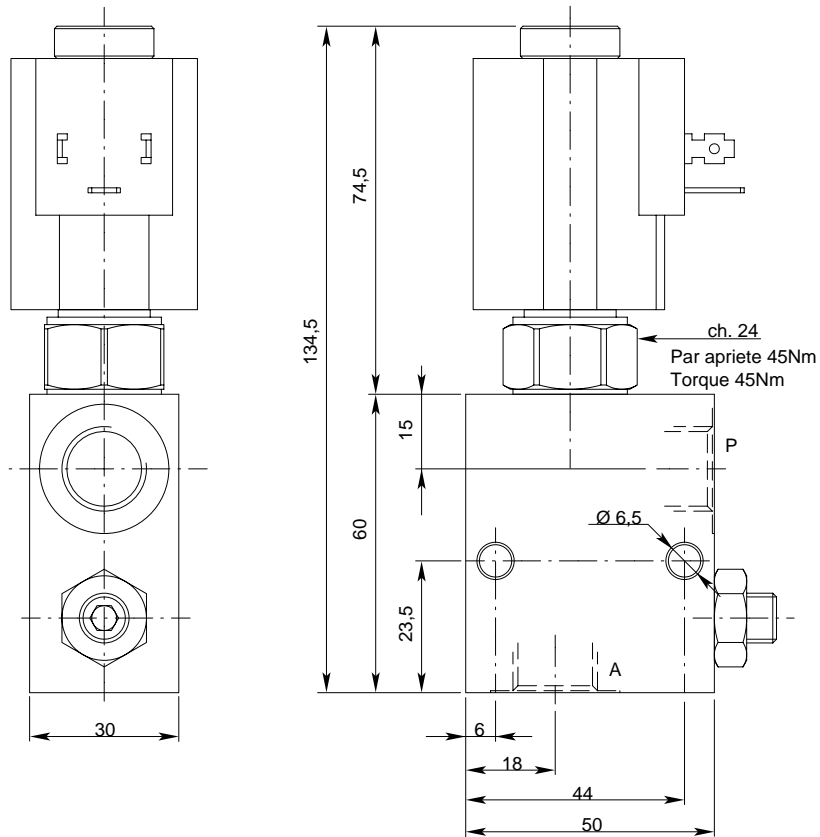
Todos los datos y calibraciones han sido obtenidos con aceite de 30 cSt a 50 °C. Campo de temperatura admisible: -20 °C, +90 °C. Filtración absoluta: 25µ.  
 All performances and calibrations are carried out by using hydraulic oil with viscosity approx. 30 cSt at 50 °C. Temperature range: -20 °C, +90 °C. Filtration absolute: 25µ.



Modello Type	P A	Pressione massima Max pressure bar	Portata max Max flow l / min
EV40 - 38 / EV40 - 38 - VE	3/8" gas	300	45
EV40 - 12 / EV40 - 12 - VE	1/2" gas		



## Diseño / Drawings



## Codificación de pedido / Ordering code

**EV40 - 12 - B - VE**

Modelo / Type

Los datos no son imperativos, **CBF** se reserva el derecho de modificar sin previo aviso.  
The specifications are not binding, **CBF** reserves the right to introduce modifications without notice.